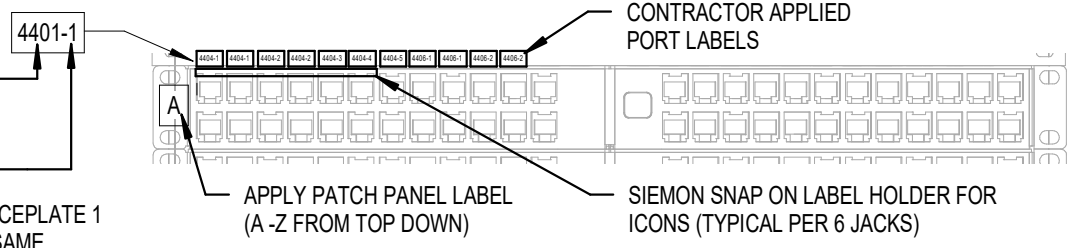
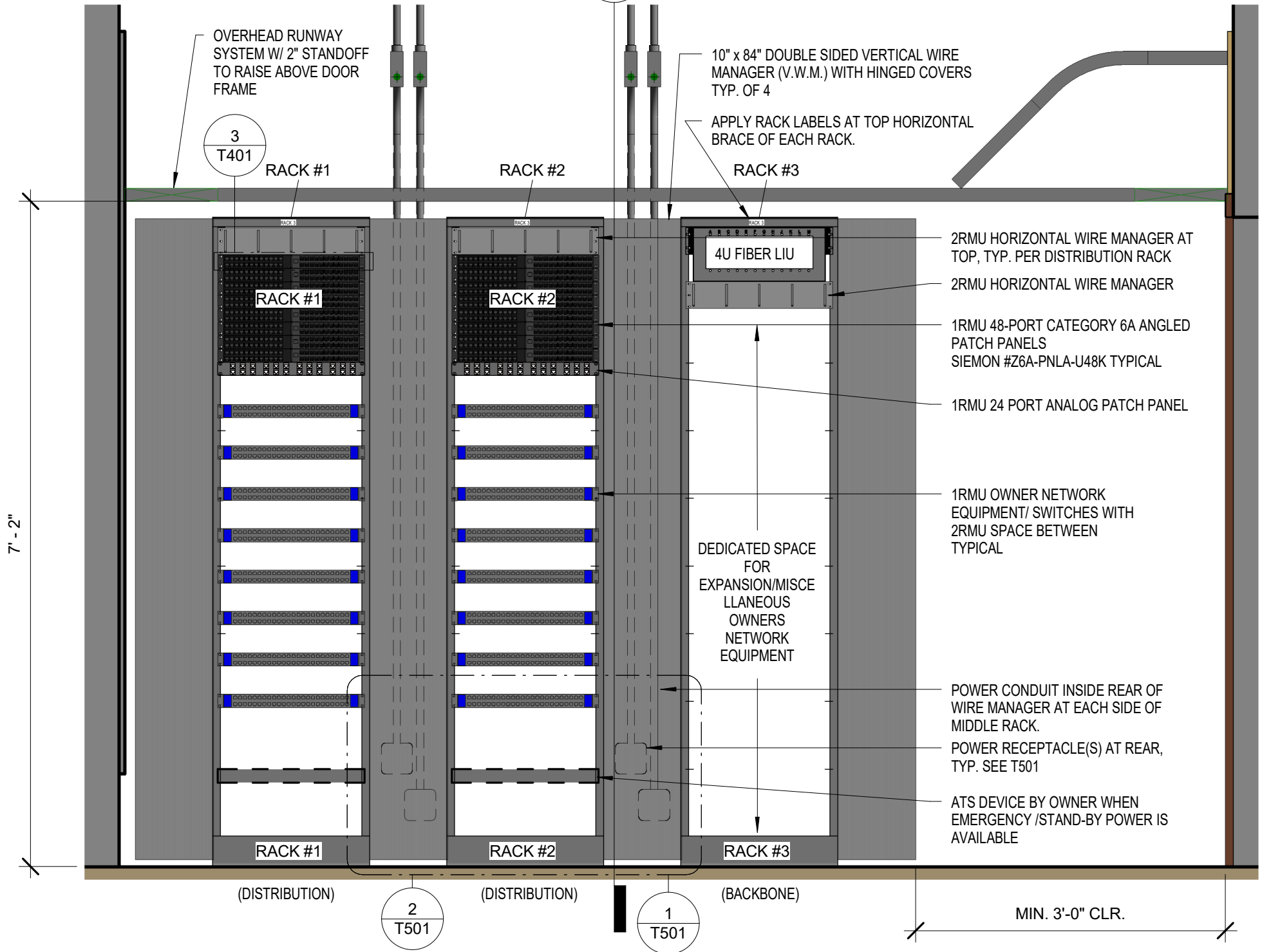


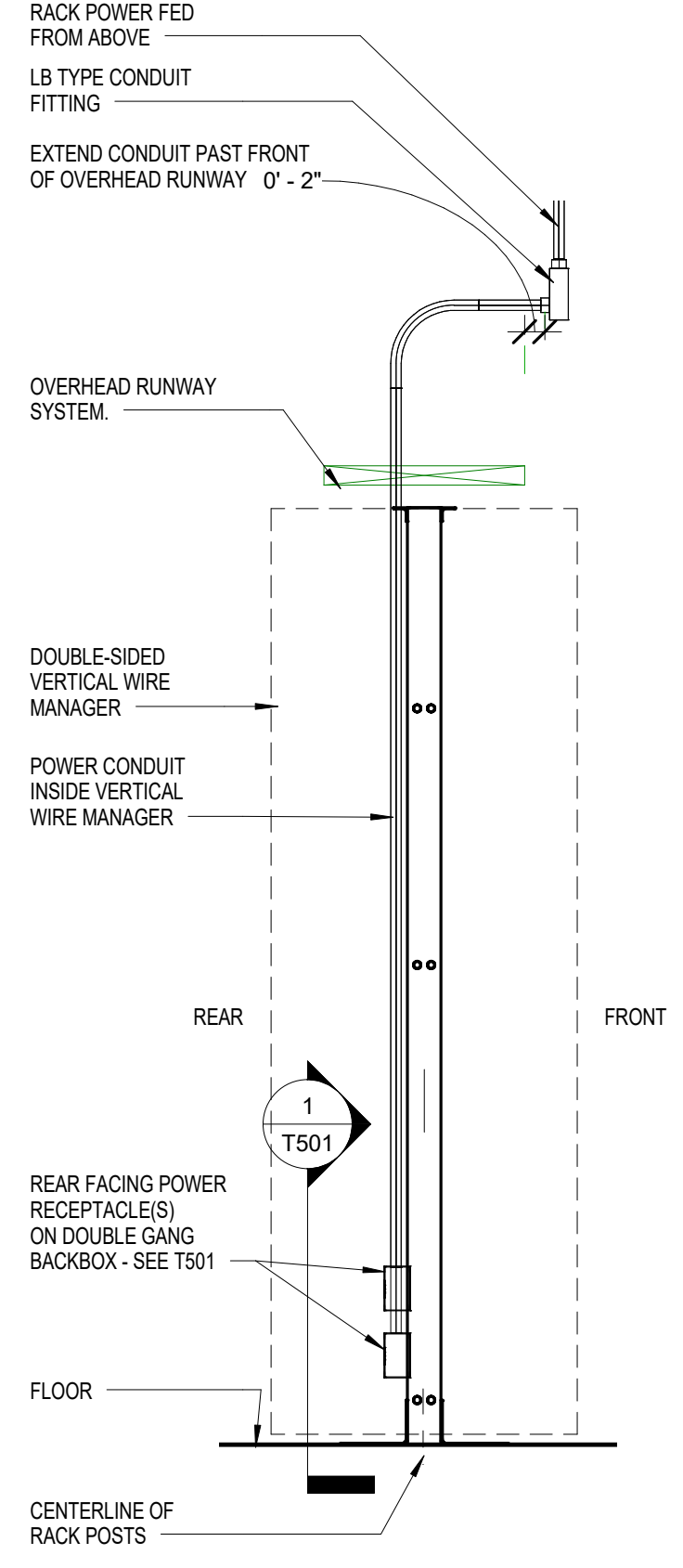
PATCH PANEL PORT LABELS:
 OUTLET LOCATION/ROOM #
 FACEPLATE#: NUMERIC
 SEQUENCE CLOCKWISE WITHIN
 ROOM OR SPACE
 EXAMPLE SHOWS ROOM 4401, FACEPLATE 1
 (DIFFERENT PORTS WITHIN THE SAME
 FACEPLATE WILL HAVE THE SAME LABEL)



3 TYPICAL 48-PORT 1U ANGLED PATCH PANEL DETAIL
 N.T.S.



1 RACK ELEVATION - FRONT OF RACKS
 3/4" = 1'-0"



2 SECTION THRU WIRE MGR
 3/4" = 1'-0"



BRA
 BR+A CONSULTING ENGINEERS
 10 Guest Street, 4th Floor
 Boston, MA 02135
 617.254.0016
 brplusa.com

PROJECT: DUKE UNIVERSITY
 OIT COMMUNICATIONS ROOM REQUIREMENTS
 DESCRIPTION: TYPICAL COMMUNICATIONS ROOM RACK ELEVATIONS

JOB NO.: --
 CHECKED: RMT
 DRAWN: AMV
 DATE: 12/05/2019
 SCALE: As indicated
 SKETCH:
T401
 REV. DWG: